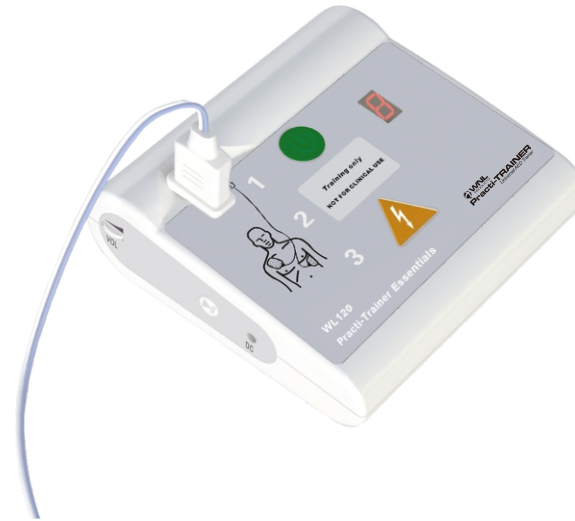


**WNL**  
PRODUCTS  
**Practi-TRAINER<sup>®</sup>**  
Universal AED Trainer  
*Essentials*



- 1** TURN ON
- 2** FOLLOW PROMPTS
- 3** PRESS SHOCK BUTTON IF INSTRUCTED

# Practi-Trainer Essentials

## | WL120 |

Directions for Use



Manufactured for WNL Products  
275 Hopping Brook Road, Holliston, MA 01746  
800-884-9629

[www.wnlproducts.com](http://www.wnlproducts.com)

Date: 2022-07-26  
Doc. No.: WNL-120D+-US  
Version: C3

- Thank you for purchasing WL120 Practi-TRAINER<sup>®</sup> Essentials
- Please read the instruction manual carefully and thoroughly before operating the machine
- Keep manual available for future reference

## **Product Introduction**

The Practi-TRAINER<sup>®</sup> Automatic External Defibrillator (AED) Training unit is designed to prepare emergency responders to use a real AED. This trainer provides a variety of training “scenarios” to help responders become familiar with the AED, and allow them to demonstrate the basic skills necessary to use the AED in an emergency. These scenarios follow the guidelines as set forth by the “American Heart Association Guidelines for CPR and ECC.”

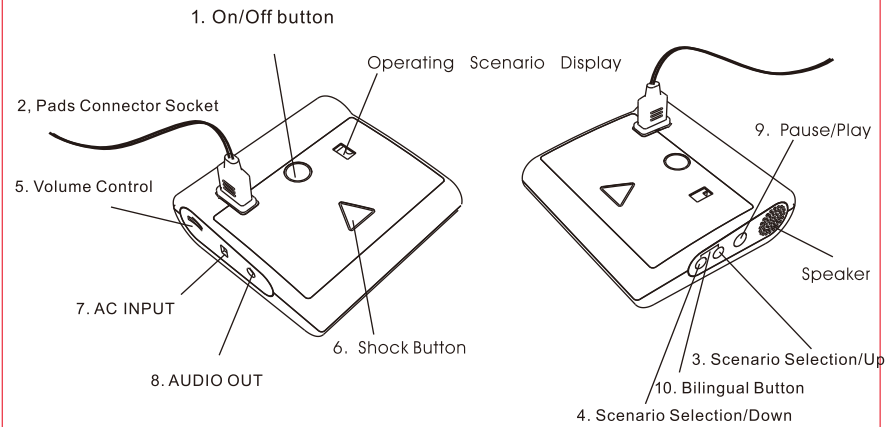
NOTE: Before using a real AED, the responder should have completed an accredited responder training program, which may include the use of the Practi-TRAINER<sup>®</sup> AED Trainer. Having completed such a course, in addition to demonstrating proficiency in AED use, the responder should also be able to demonstrate a proficiency in cardiopulmonary resuscitation (CPR), as well as knowledge of applicable medical protocols and procedures.

## **The Practi-TRAINER<sup>®</sup> Essentials:**

1. Provides simulated shock delivery. It does not have the capability to deliver a real shock, ensuring safety during training.
2. Is designed for use with CPR manikins.
3. Is pre-configured with 5 training scenarios that simulate realistic, sudden cardiac arrest episodes. See the scenario descriptions on page 9 of this manual. These scenarios are compatible with training programs developed by internationally recognized responder programs. Check with your local medical director and Emergency Medical System for additional training requirements, protocols, and materials.

Note: This product is warranted against any manufacturer's defects, for 3 years from date of purchase.

## Product Diagram:



## Function

### 1. On/Off button

Turn on the initiate voice prompts. Press once to turn the unit on. Press again to turn it off.

### 2. Pads Connector Socket

Insert the training pads connector into the pads connector socket. The LED flashes to indicate the socket location. The LED is covered when the defibrillator pad connector is properly inserted in the socket.

### 3/4. Scenario Selection

Press these buttons to scroll through scenarios.

### 5. Metronome

To turn the metronome on or off: While the device is in the CPR mode in any scenario, press and hold the Play/Pause button for 3 seconds to turn on/off the metronome.

## Specification and Product Content

Model No.: WL120

Name: Practi-TRAINER® Essentials

Power Supply: AC Adapter 120V or 3 AA batteries

Product Size: 130 x 130 x 45 mm

Static Current: <math><10\mu\text{A}</math>

Maximum Current: <math><300\text{mA}</math>

### Product Content:

NO.	Contents	Quantity	Unit	Remark
1	Main Body	1	pc	
2	Wire Connector	2	pcs	1 yellow connector 1 pink connector
3	Adult Pads	1	pair	These pads can be used repeatedly if properly maintained
	Child Pads	1	pair	
4	Instruction Manual	1	pc	Spanish & English
5	Storage Case	1	pc	Nylon zippered case
6	AA Alkaline Batteries	3	pcs	

### 6. Volume Control

Controls the voice prompt volume.

### 7. Shock Button

Controls simulated shock delivery. The button flashes when the unit is ready to deliver a simulate shock.

### 8. AC INPUT

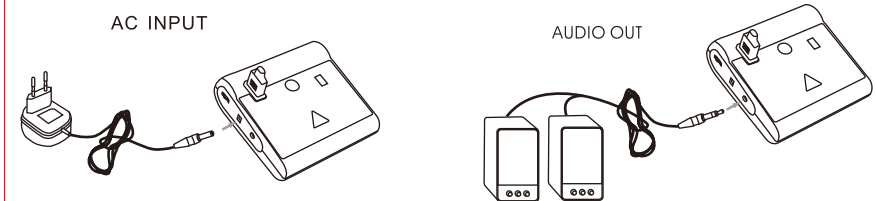
This interface connects the AC adapter (sold separately).

(Note: Do not use batteries while an adapter is connected.)

### 9. AUDIO OUT

Standard audio output interface can connect to speakers, if desired.

(Note: Clinical automatic external defibrillators do not have this interface.)



### 10. Pause/Play

This button will temporarily stop all operations of the unit. Press once to pause. Press again to continue.

### 11. Bilingual Selection

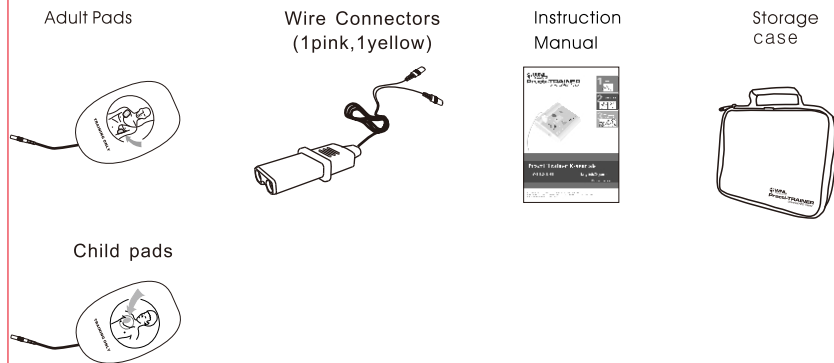
Press the up and down scenario selection buttons together and hold to change to another language. “-” or “=” is displayed on the main body. When the AED Trainer is turned on, English is the default.

## Automatic Shut Off

The device will turn off automatically if any one of these conditions occur:

1. During use, if low power is detected, the device will turn off automatically in 10 seconds.
2. If the device is paused and has not been used for 8 minutes.

## Other Components:



## 5 Preprogrammed Scenarios:

Scenarios	Description	Operation
1	Ventricular Fibrillation- With single-shock conversion	Shockable rhythm 1 shock Non-shockable rhythm CPR (then repeats)
2	Ventricular Fibrillation- Conversion the refrillation	Shockable rhythm 1 shock CPR Non-shockable rhythm CPR Shockable rhythm 1 shock CPR
3	Ventricular Fibrillation- With two shocks required	Shockable rhythm 2 shocks Non-shockable rhythm CPR (then repeats)
4	Ventricular Fibrillation- Two shocks required	Shockable rhythm 2 shocks Non-shockable rhythm CPR (then repeats)
5	Ventricular Fibrillation- Three shocks required	Shockable rhythm 3 shocks Non-shockable rhythm CPR (then repeats)

## Storing your AED

### Pads Maintenance

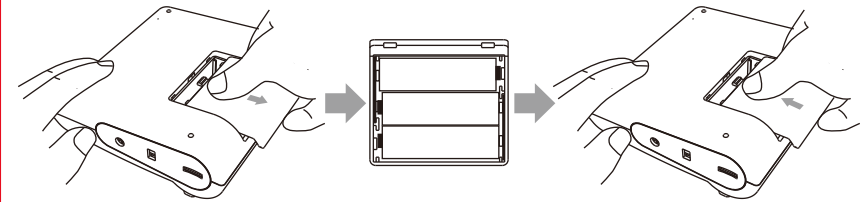
- Keep the gel side of the pads clean by avoiding dust and dirt.
- After use, store pads with their original covers.
- If the adhesive of the pads declines, users can wash it with water for several seconds. Stickiness will be restored after the pads dry. Be careful not to use too much water otherwise the adhesive will be affected.
- Do not wipe the gel side of the pads with paper towel or a cloth.
- Do not scrape the gel side of the pads with your finger or any kind of brush.
- With proper care, the pads can be re-used many times.
- Do not wash the pads frequently and never use detergent.
- Do not store pads in direct sunshine, high temperature, humidity, or in dusty areas.

### AED Trainer Maintenance

- After shutting of power, make sure to pull out the pads' connector from the main body of the AED Trainer. Pull the connector, not the wires.
- If the main body is dirty, users can use cloth with water or neutral detergent but must wring the cloth dry and wipe gently. If necessary, clean or sterilize with a cloth soaked in alcohol.
- Do not clean it with other volatile materials.
- Do not make the wiping cloth too wet as water may get into the unit.
- Do not clean it with a solvent.
- Do not put the AED Trainer in direct sunlight, high temperature, or dusty or dirty areas. Keep away from moisture.
- Store the main body, electrode pads, wire leads, adapter, and instruction manual in the storage bag.
- Failure to comply with the above instructions may void the warranty.

## Battery Use

1. Open the battery compartment following the arrowhead direction and slide the cover off.
2. Insert 3 AA batteries and note the polarity.
3. Replace the battery compartment's cover.



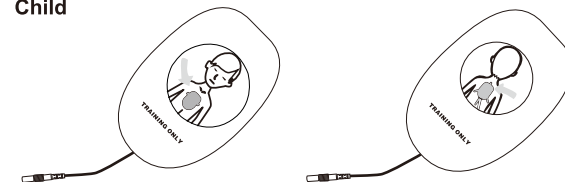
## Training Pads

Note: The training pads are for training use only and will not function with an actual, clinical AED.

### Training pads – Adult

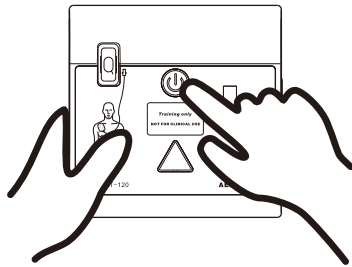


### Child



## Operating Instructions

1. Turn on the trainer and select a training scenario.  
Press the green button to turn on the unit. Then press the scenario selection button to select one of the preprogrammed training scenarios. The number of the operating scenario will be displayed on the LED display window.  
Note: The last setting will be stored and maintained even if the unit has been turned off.

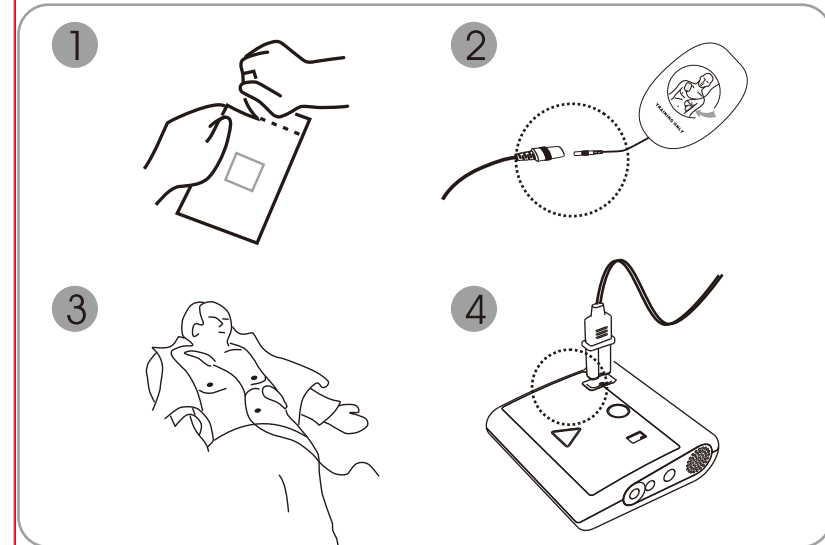


### 2. Connect pads

Note: The yellow connector is for adult simulations and the pink connector is for a child manikin.

#### Wire Connection

1. Select the proper training pads (adult or child).
2. Connect the wire to each of the pads.
3. Attach pads to the proper positions on the manikin.
4. Insert the wire connector into the socket with the orange flashing light.

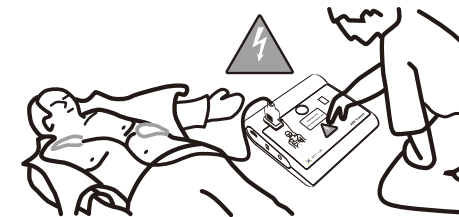


#### Note:

- Do not bend or stretch wires.
- Hold the connector when pulling it out of the trainer.
- Never pull the wires.

### 3. Operate following the voice prompts

According to the selected scenario, operate the trainer following the voice prompts, including observing the patient's breath and heartbeat rhythm, pressing the orange shock button and administering CPR.



Note: This unit provides for 2 minutes of CPR before “re-evaluating” the patient. During that time, the LED will flash.